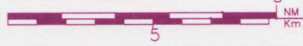
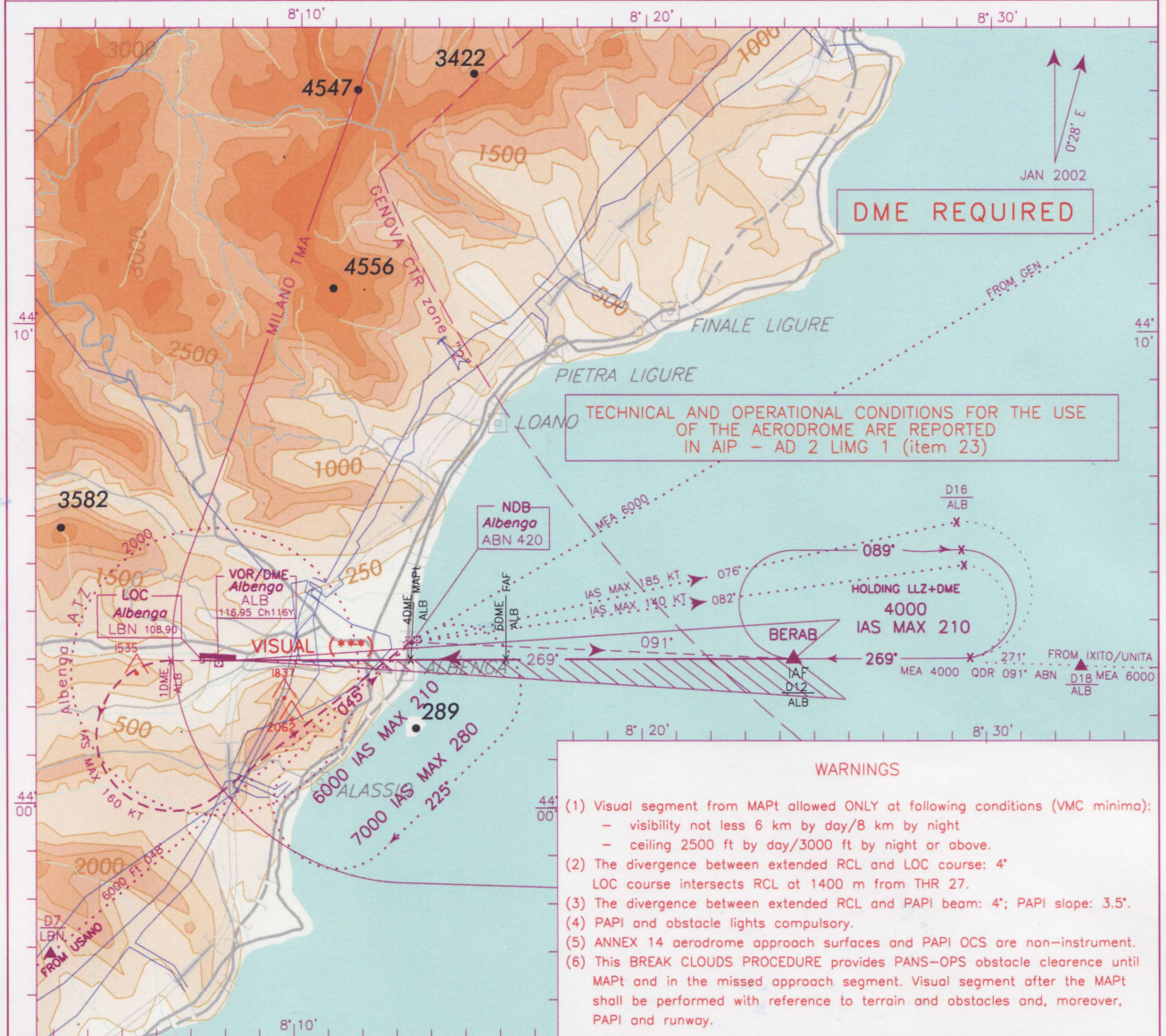


ICAO - VISUAL APPROACH CHART
 BREAK CLOUDS FOR VFR APPROACH RWY 27

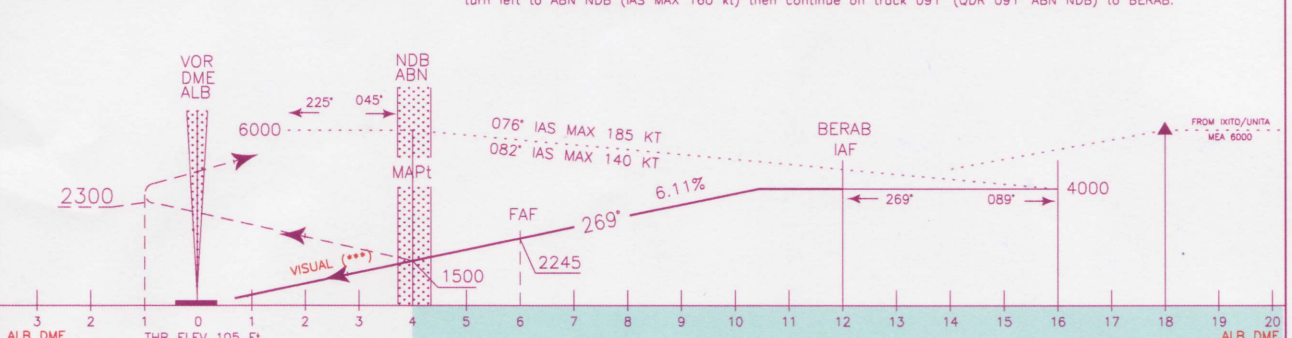
AD 2 LIMG 5-5

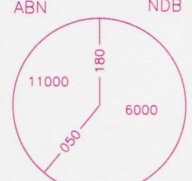
DISTANCES : NM ALTITUDES : FEET SCALE 1:250.000 	AFIS Albenga Aerodrome Info 123.850 FIS Milano Info 128.925	AD ELEV 149	LIMG	<h1 style="margin:0;">ALBENGA</h1> <h2 style="margin:0;">LOC RWY 27</h2> <p style="margin:0;">CAT A-B-C</p>
--	--	----------------	------	---

CHANGE: NEW "LOCALIZER" ABBREVIATION and RENAMED PROCEDURE



TRANSITION ALT 7000
 MISSED APPROACH: Proceed on track 269° climbing to 4000 ft. At 1 NM ALB DME after the field, to be reached at 2300 ft or above, turn left to ABN NDB (IAS MAX 160 kt) then continue on track 091° (QDR 091° ABN NDB) to BERAB.



OCA(OCH)		A			B			C			GS	FT PER MIN	FAF-MAPt		MAPt-THR		DME ALB	ALT (HGT)	MNM SECT ALT	
		LOC	DME	CLIMB GRADIENT	LOC	DME	CLIMB GRADIENT	LOC	DME	CLIMB GRADIENT			(*) TIMING	(*) TIMING	(*) TIMING	(*) TIMING			ABN	NDB
STRAIGHT IN APPROACH	LOC	M.A. CLIMB GRADIENT 5%	1500 (1395)									80	495	1 : 30	2 : 43	6	2245 (2140)			
	DME	M.A. CLIMB GRADIENT 2.5%	1800 (1695)									100	619	1 : 12	2 : 11	5	1875 (1770)			
	CIRCLING		NOT ALLOWED (**)									120	743	1 : 00	1 : 49	4	1500 (1395)			
												140	866	0 : 51	1 : 33	3	1125 (1020)			
												160	990	0 : 45	1 : 22	2	750 (645)			

(*) TIMING NOT ALLOWED FOR DEFINING MAPt
 (**) TRAFFIC CIRCUIT FOR RWY 09 ALLOWED ONLY DURING DAYLIGHT AND NORTH OF THE FIELD AT MINIMUM ALTITUDE OF 1850 FT
 (***) FOR VISUAL SEGMENT SEE ALSO ALBENGA VISUAL AIDS CHART AD2 LIMG 5-7